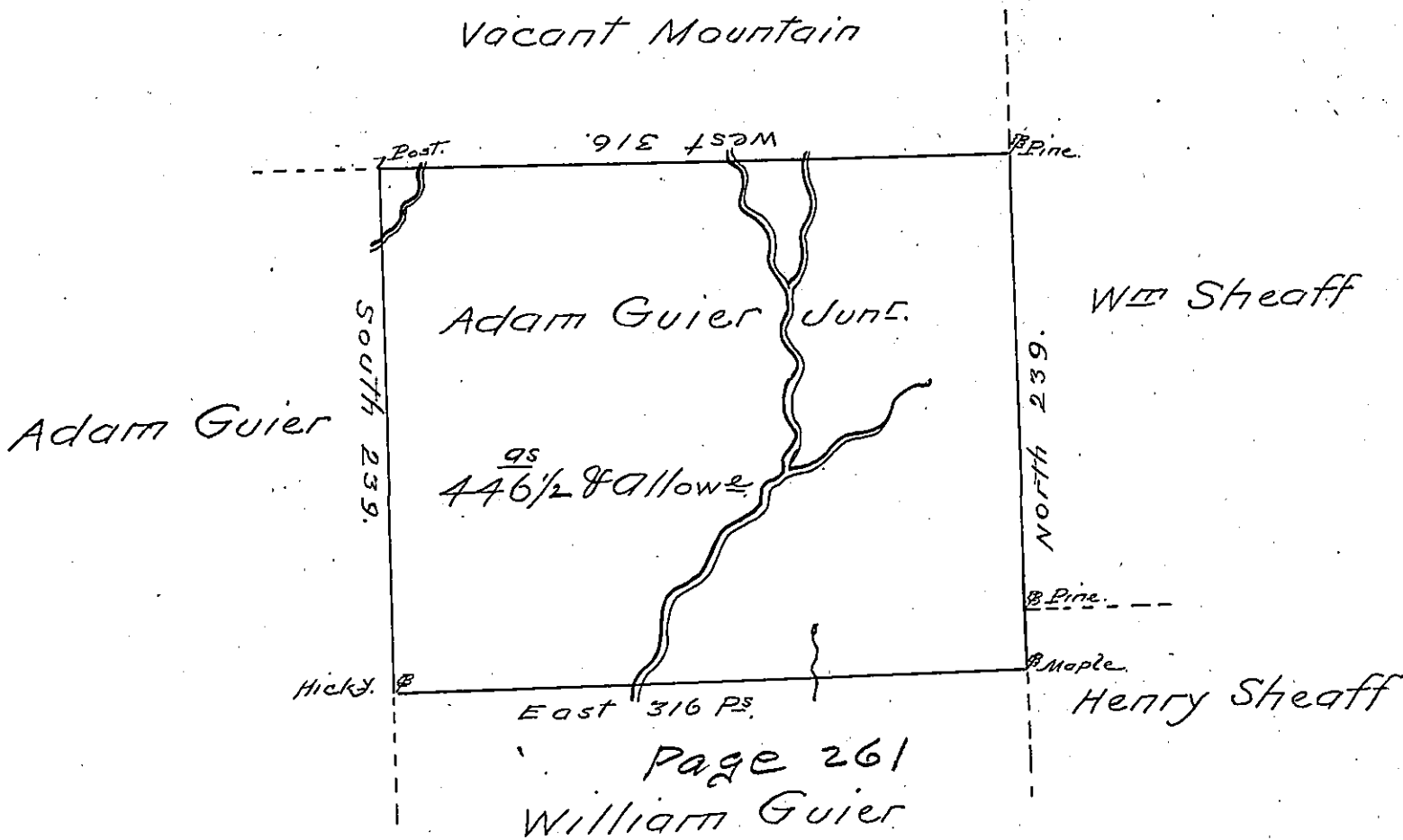


23  
23  
23  
23  
23



A Draught of a Tract of land called \_\_\_\_\_  
 Situate on the Waters of Wappalopen Creek Join-  
 ing Land Surveyed for William Guier & others in  
 Luzerne County Containing four Hundred & forty  
 Six acres  $\frac{1}{2}$  & allowe of Six & Cent for roads &c  
 Surveyed for Adam Guier Junr. the 16<sup>th</sup> Day of  
 April 1789 in pursuance of a warrant Dated the  
 13<sup>th</sup> Day of March 1789

by Wm Gray D.S.

To John Lukens Esqr.  
 Survr. Genl.

IN TESTIMONY that the above is a copy of the original remaining on file in  
 the Department of Internal Affairs of Pennsylvania, made  
 conformably to an Act of Assembly approved the 16th day of  
 February, 1833, I have hereunto set my Hand and caused  
 the Seal of said Department to be affixed at Harrisburg,  
 this thirtieth day of November 1904.

*Isaac R. Brown*  
 Secretary of Internal Affairs.